

TUFF-VENT

Steel security louvred doors



**STEEL DOORS
FOR THE
REAL WORLD**



INTRUDER RESISTANT

Certified to **PAS 24**
and approved by
Secured by Design



CE MARKED

CE Marked to
BS EN 14351-1



MADE TO MEASURE

All steel doors are made to
order at our UK factory and
delivered fully assembled.



ROBUST

Steel Door Solutions

Scandinavian design. Manufactured in Britain



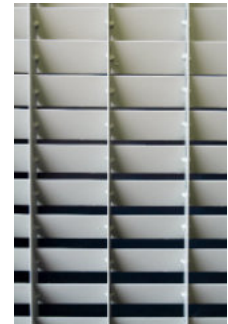
TUFF-VENT

Steel security louvred doors

Alongside our standard steel and aluminium louvred products, we also manufacture a security rated louvred door. Offering maximum free airflow whilst maintaining strength and security, TUFF-VENT is suitable for plant rooms, boiler rooms etc where a continuous airflow is required to ventilate machinery. TUFF-VENT is fully CE compliant and can be polyester powder coated in our standard range of colours.

> DOOR LEAF

Production sizes:	TUFF-VENT is available made to measure and delivered fully assembled.
Thickness:	A standard 2mm steel louvre vane is used throughout, welded at every junction.
Material:	2mm galvanised steel sections as standard.
Construction:	Constructed using hollow metal standardised sections.



> DOOR FRAME

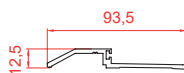
Construction:	Fully welded construction with 10no. adjustable fixing feet per jamb, variable sub-frame supplied as standard to accommodate site tolerance of -0/+30mm. The frame is fitted with 5no. surface mounted hinges.
Opening:	Single swing latched as standard.

> SIZES

Configuration:	Max frame width (mm):	Max frame height (mm):
Single leaf without side & over panels:	1085	2180
Double leaf without side & over panels:	2180	2180
Coupled or stand alone side panels(either side):	700	2195
Coupled or stand alone over panels:	2500	600

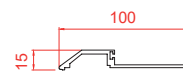
> THRESHOLD

Standard



15mm aluminium
(DDA compliant)

Optional



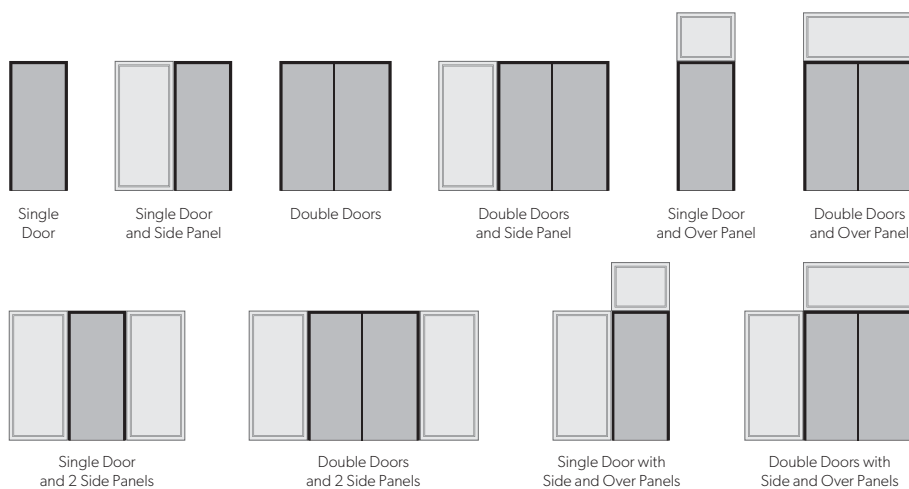
15mm steel pressed rebated threshold
(DDA compliant)

> FREE AREA

When calculated on a 1000mm x 2100mm over frame door, TUFF-VENT achieves a free area of 55 %. When based on the area of the louvres only, this equates to 72%.

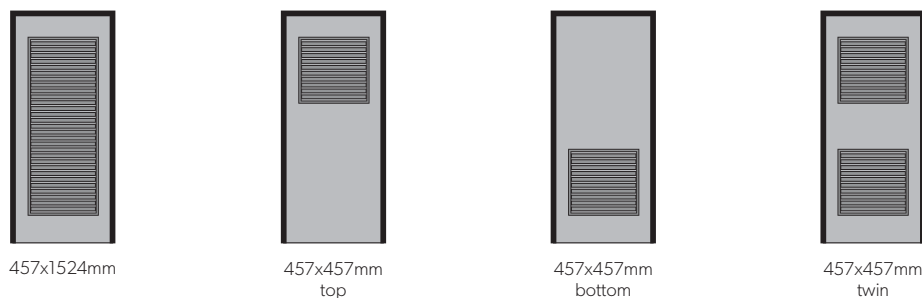
> PANEL ARRANGEMENTS

Panels:	Side and over panels can be supplied.
Panel sizes:	Side panels are available up to 1100mm wide x 2500mm high. Over panels are available up to 2500mm (single door) or 2200mm (double door).
Options:	Combinations to create enclosures. Please consult the Sales office with specific requirements.



> LOUVRE PANEL OPTIONS

Options:	TUFF-VENT grid is also available as a panel to fit into INNA-DOR, OUTA-DOR and SECUR-DOR 2.
Sizes:	Two standard sizes: 457mm x 457mm and 457mm x 1524mm, giving approximately 0.15m ² and 0.5m ² free area respectively.



> SECURITY

The TUFF-VENT doorset is tested to PAS 24 and approved by Secured by Design - the official UK Police initiative to 'design out crime'. Please note however that TUFF-VENT is not available certified to LPS 1175 like TUFF-DOR.




> **FINISHES**

Standard




Polyester Powder Coated from Standard Colour Range


Optional



Polyester Powder Coated from Non-Standard Colour Range



Stainless Steel Brushed, Polished or Patterned



Unfinished for site finishing

> **LOCKS AND HARDWARE**

We stock a wide range of steel door parts, including: handles, locks, hinges, seals, panic hardware, closers & stays, cylinders, paint, thresholds, access control hardware and plates.

TUFF-VENT is fitted with a Hooply lock, with Securefast escutcheons and TS007 cylinder as standard. Double door configurations are available with flushbolts. All doors are delivered fully assembled.



ROBUST UK LTD Sutherland Road, Longton, Stoke-on-Trent, Staffordshire, ST3 1HZ
Tel: +44 (0) 1782 592900 Email: sales@robust-uk.com

Individual specifications may vary as Robust conduct a policy of continuous product development.